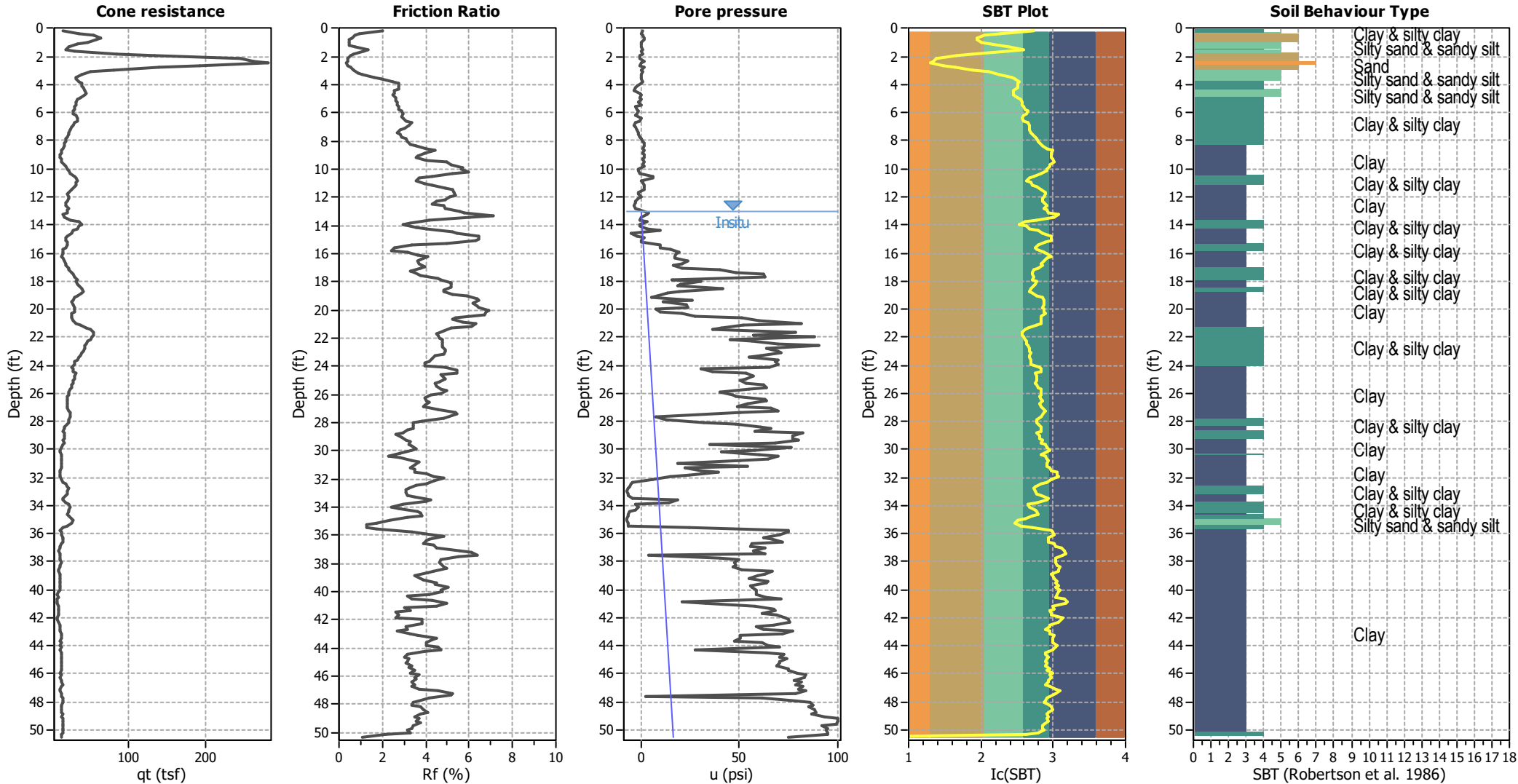


CPT basic interpretation plots



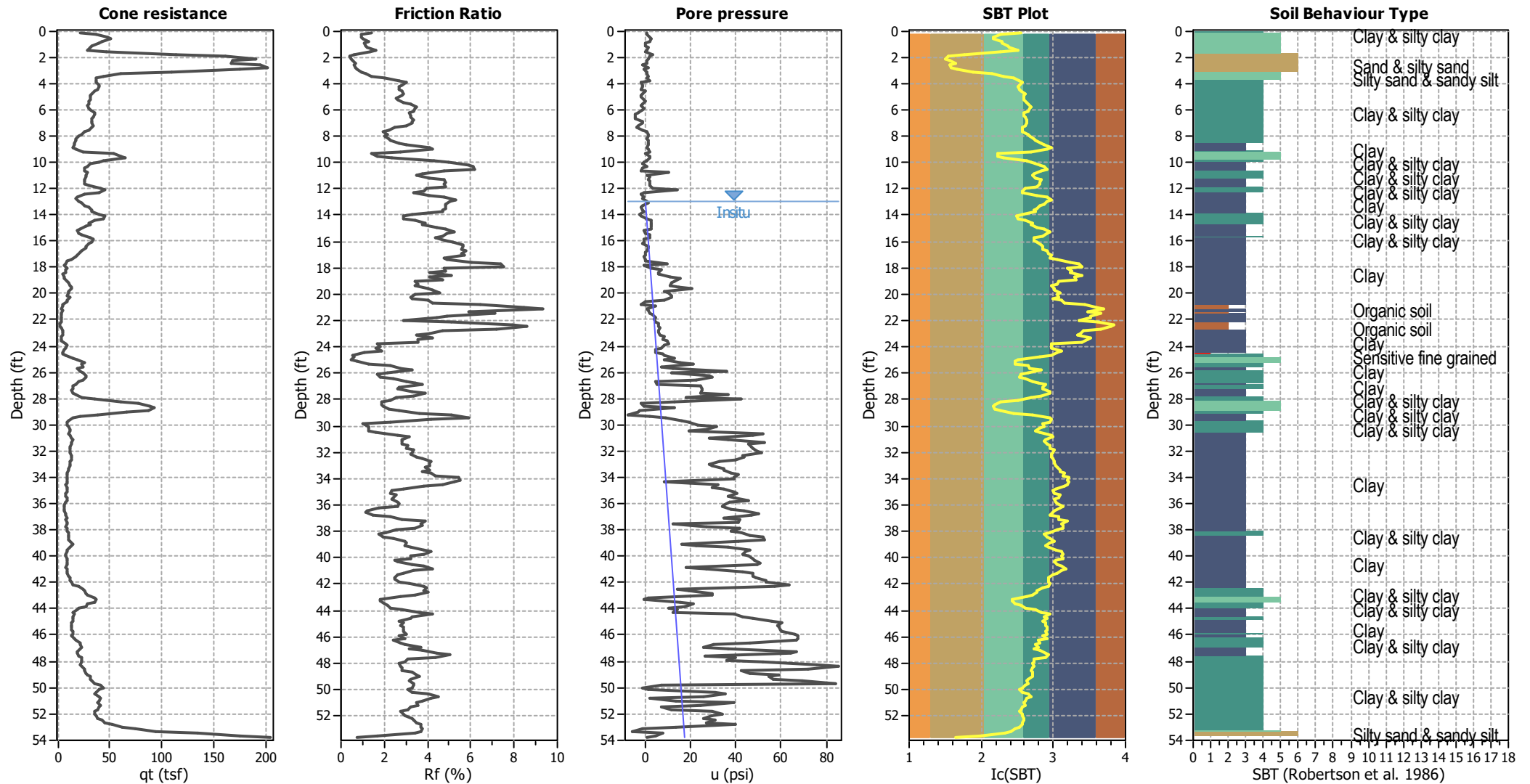
Input parameters and analysis data

Analysis method:	B&I (2014)	Depth to GWT (erthq.):	13.00 ft	Fill weight:	N/A
Fines correction method:	B&I (2014)	Average results interval:	3	Transition detect. applied:	No
Points to test:	Based on Ic value	Ic cut-off value:	2.60	K <sub>0</sub> applied:	Yes
Earthquake magnitude M <sub>w</sub> :	7.28	Unit weight calculation:	Based on SBT	Clay like behavior applied:	Sands only
Peak ground acceleration:	0.39	Use fill:	No	Limit depth applied:	No
Depth to water table (insitu):	13.00 ft	Fill height:	N/A	Limit depth:	N/A

SBT legend

1. Sensitive fine grained	4. Clayey silt to silty	7. Gravely sand to sand
2. Organic material	5. Silty sand to sandy silt	8. Very stiff sand to
3. Clay to silty clay	6. Clean sand to silty sand	9. Very stiff fine grained

## CPT basic interpretation plots



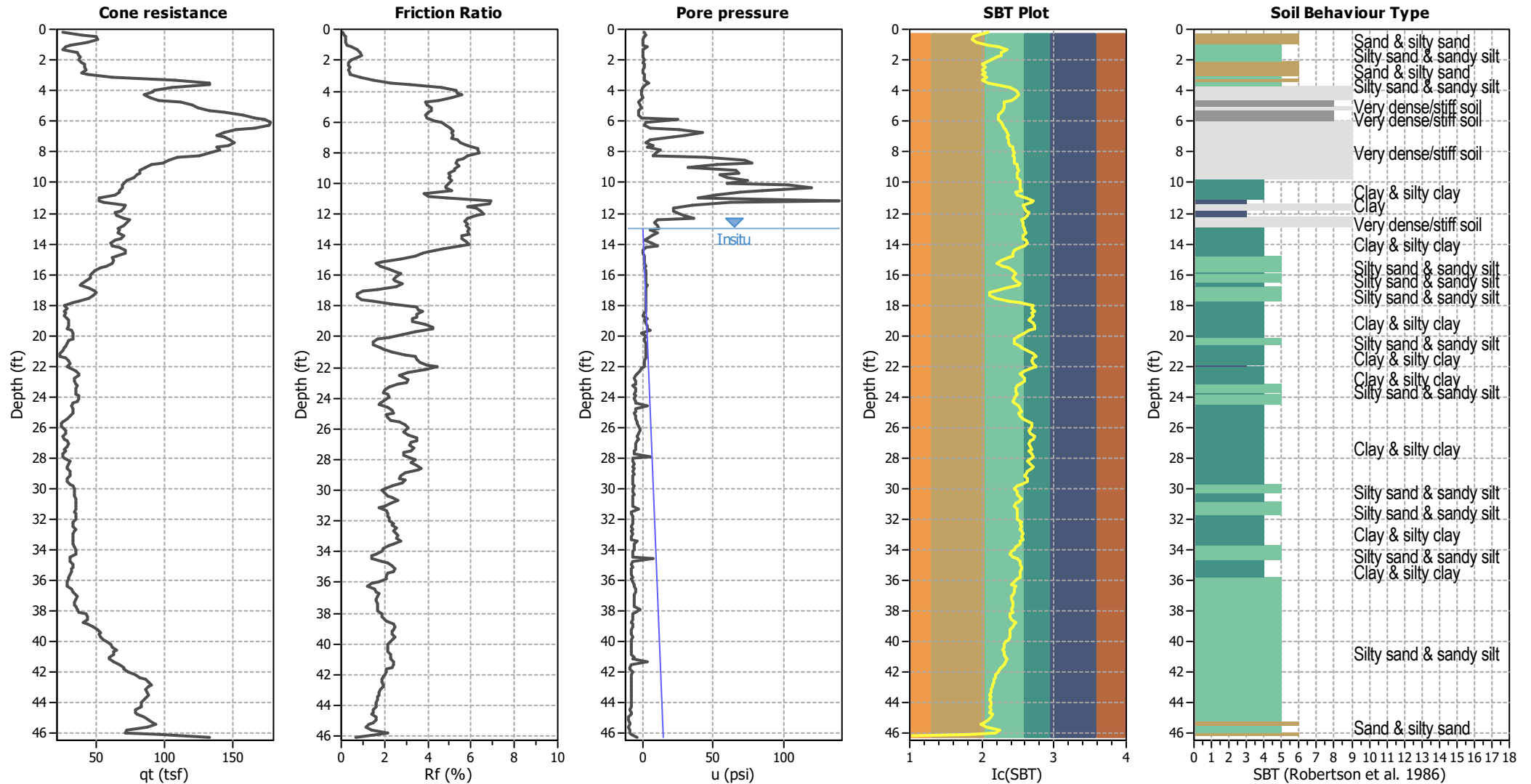
## Input parameters and analysis data

Analysis method:	NCEER (1998)	Depth to water table (earthq.):	13.00 ft	Fill weight:	N/A
Fines correction method:	NCEER (1998)	Average results interval:	3	Transition detect. applied:	No
Points to test:	Based on $I_c$ value	$I_c$ cut-off value:	2.60	$K_o$ applied:	Yes
Earthquake magnitude $M_w$ :	7.28	Unit weight calculation:	Based on SBT	Clay like behavior applied:	Sands only
Peak ground acceleration:	0.39	Use fill:	No	Limit depth applied:	No
Depth to water table (insitu):	13.00 ft	Fill height:	N/A	Limit depth:	N/A

## SBT legend

1. Sensitive fine grained	4. Clayey silt to silty	7. Gravely sand to sand
2. Organic material	5. Silty sand to sandy silt	8. Very stiff sand to
3. Clay to silty clay	6. Clean sand to silty sand	9. Very stiff fine grained

## CPT basic interpretation plots



## Input parameters and analysis data

Analysis method:	B&I (2014)	Depth to GWT (erthq.):	13.00 ft	Fill weight:	N/A
Fines correction method:	B&I (2014)	Average results interval:	3	Transition detect. applied:	No
Points to test:	Based on Ic value	Ic cut-off value:	2.60	K <sub>0</sub> applied:	Yes
Earthquake magnitude M <sub>w</sub> :	7.28	Unit weight calculation:	Based on SBT	Clay like behavior applied:	Sands only
Peak ground acceleration:	0.39	Use fill:	No	Limit depth applied:	No
Depth to water table (insitu):	13.00 ft	Fill height:	N/A	Limit depth:	N/A

## SBT legend

1. Sensitive fine grained	4. Clayey silt to silty	7. Gravely sand to sand
2. Organic material	5. Silty sand to sandy silt	8. Very stiff sand to
3. Clay to silty clay	6. Clean sand to silty sand	9. Very stiff fine grained